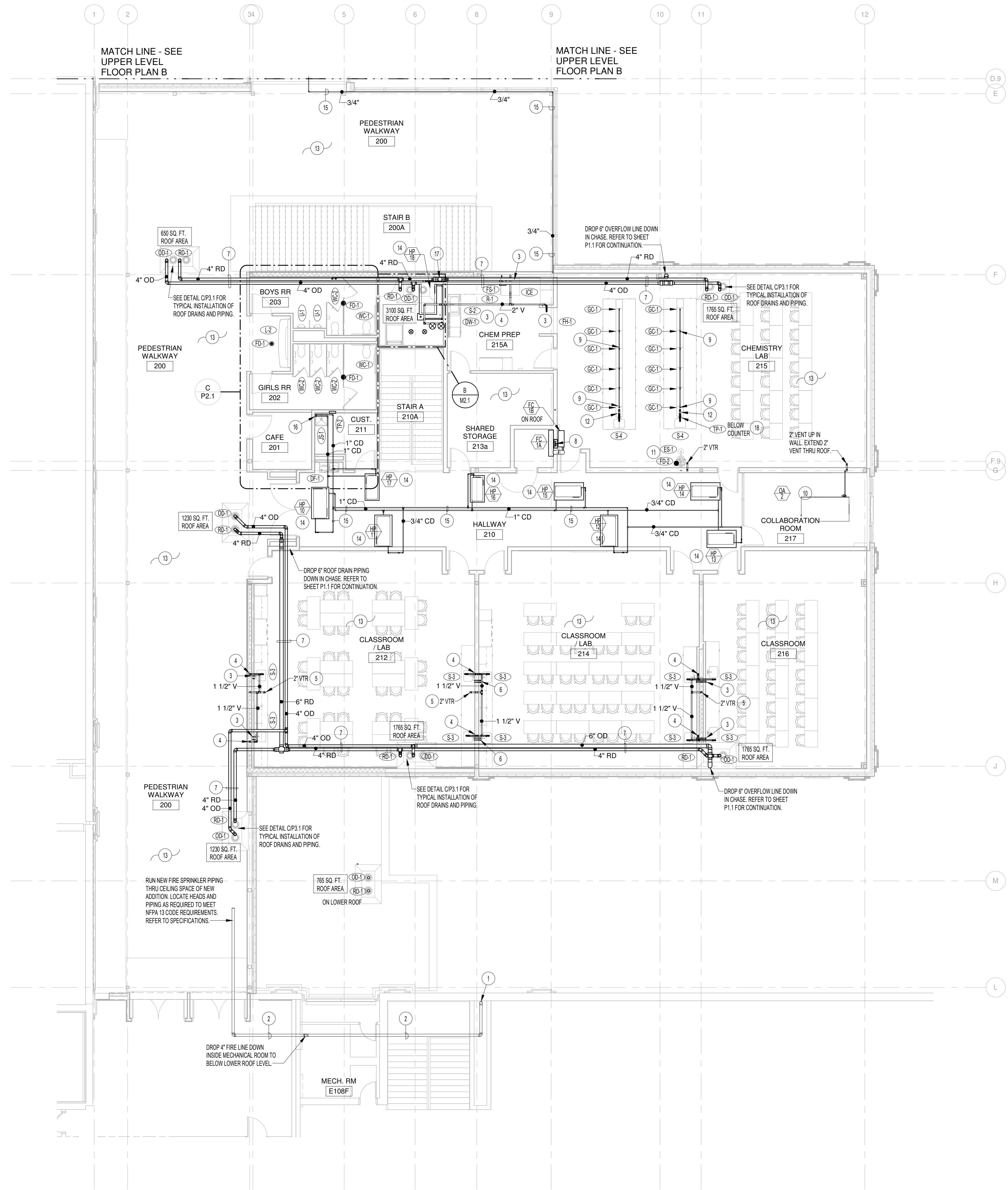
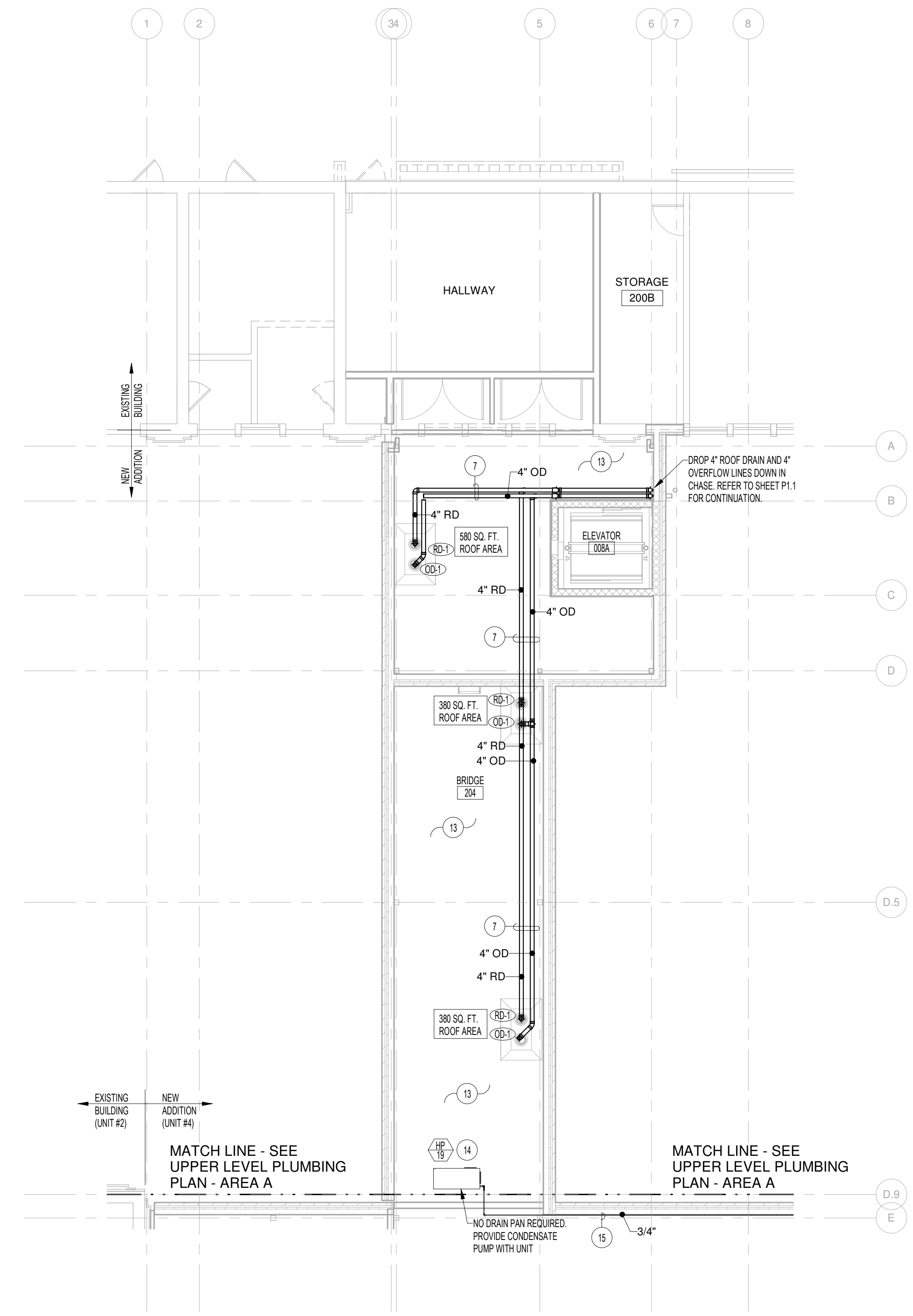
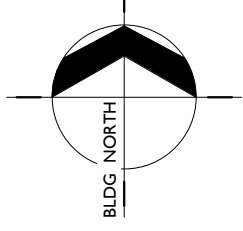


PLAN NOTES:

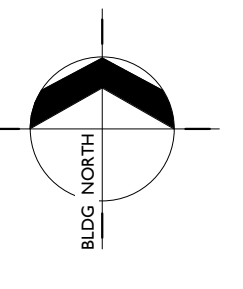
- RISE NEW 4" FIRE SPRINKLER LINE UP IN CHASE TO ABOVE EXISTING AIR HANDLER. ROUTE NEW PIPING THRU EXISTING CEILING SPACES TO NEW ADDITION. REFER TO SPECIFICATIONS FOR FIRE SPRINKLER REQUIREMENTS.
- RUN ALL NEW PIPING ABOVE CEILING AS SHOWN. WHERE THERE ARE NO CEILING, RISE PIPING UP AND RUN THRU JOIST SPACE. COORDINATE PIPING WITH DUCTWORK, BUILDING STRUCTURE, AND OTHER PIPING.
- RISE 1/2" HOT AND COLD WATER LINES UP IN WALL FOR FIXTURES LOCATED ON THIS LEVEL. REFER TO SHEET P1.1 FOR CONTINUATION OF WATER PIPING IN CEILING SPACE OF MAIN LEVEL.
- RISE 1-1/2" WASTE LINE UP THRU FLOOR FOR FIXTURES ON THIS LEVEL. OFFSET WASTE PIPING AS REQUIRED FOR BUILDING STRUCTURE. REFER TO SHEET P1.1 FOR CONTINUATION OF PIPING BELOW FLOOR.
- RISE 2" VENT FROM MAIN LEVEL FIXTURES UP IN WALL ABOVE. OFFSET VENT AS REQUIRED FOR BUILDING STRUCTURE. REFER TO SHEET P1.1 FOR VENT PIPING ON MAIN LEVEL. EXTEND 2" VENT THRU ROOF.
- RISE 1/2" HOT AND COLD WATER LINES UP IN WALL FOR FIXTURES LOCATED ON THIS LEVEL. OFFSET AS REQUIRED FOR FLOOR BEAM AND RISE LINES UP IN BOTTOM OF CABINET. REFER TO SHEET P1.1 FOR CONTINUATION OF WATER PIPING IN CEILING SPACE OF MAIN LEVEL.
- RUN ROOF DRAIN AND OVERFLOW PIPING THRU JOISTS. KEEP PIPING AS HIGH AS POSSIBLE AND GRADE AT 1/4" PER FOOT. COORDINATE WITH BUILDING STRUCTURE, OTHER PIPING, AND DUCTWORK.
- RISE 3/4" HIGH PRESSURE GAS LINE UP IN WALL TO VALVE BOX. PROVIDE PRESSURE REGULATOR, MANUAL SHUT-OFF VALVE, AND AUTOMATIC VALVE IN VALVE BOX MOUNTED 5'-0" ABOVE FLOOR. PROVIDE RED EMERGENCY GAS SHUT-OFF PUSH-BUTTON ON WALL AND CONNECT TO AUTOMATIC GAS VALVE FOR EMERGENCY SHUT-DOWN.
- RISE 3/4" LOW PRESSURE GAS LINE UP THRU FLOOR BELOW CHEMISTRY MILLWORK. RUN GAS PIPING IN MILLWORK AND RISE UP AT EACH GAS COCK LOCATION. PROVIDE SHUT-OFF VALVE AT EACH RISE. COORDINATE PIPING WITH MILLWORK FINISHED. REFER TO DETAIL AP3.1.
- GAS FIRED OUTSIDE AIR UNIT PROVIDED AND INSTALLED BY MECHANICAL CONTRACTOR. PLUMBING CONTRACTOR TO ROUGH-IN AND CONNECT NEW 3/4" GAS LINE COMPLETE WITH PRESSURE REGULATOR, SHUT-OFF VALVE AND FLEXIBLE HOSE. REFER TO DETAIL NP3.1 FOR TYPICAL INSTALLATION.
- RISE 1-1/2" COLD WATER LINE UP THRU FLOOR AND CONNECT TO EMERGENCY SHOWER AND EYE WASH STATION. REFER TO SHEET P1.2 FOR FIXTURES LOCATION AND TO DETAIL DP3.1 FOR TYPICAL PIPING CONNECTIONS.
- RISE 1/2" HOT AND COLD WATER LINES AND 1-1/2" WASTE AND VENT LINES UP THRU FLOOR TO CONNECT TO ISLAND SINK. REFER TO DETAIL EP3.2 FOR TYPICAL VENTING OF ISLAND SINK.
- ENTIRE ADDITION TO BE FIRE SPRINKLED. LOCATE HEADS AND PIPING AS REQUIRED THROUGHOUT BOTH LEVELS OF NEW ADDITION TO MEET NFPA 13 CODE REQUIREMENTS. CONTRACTOR TO TAP ONTO EXISTING FIRE RISER AND ALARM VALVE LOCATED ON MAIN LEVEL OF UNIT #3 (DOM BUILDING).
- WATER SOURCE HEAT PUMP PROVIDED AND INSTALLED BY MECHANICAL CONTRACTOR. PLUMBING CONTRACTOR TO PROVIDE AND CONNECT 3/4" CONDENSATE DRAIN LINE TO UNIT AND SEPARATE 3/4" DRAIN LINE TO SHEET METAL DRAIN PAN.
- KEEP DRAIN PIPING AS HIGH AS POSSIBLE. SLOPE DRAIN LINES AT 1/4" PER FOOT AND RUN TO NEAREST SINK OR FLOOR DRAIN AS SHOWN. COORDINATE WITH OTHER PIPING, DUCTWORK AND BUILDING STRUCTURE.
- DROP (2) 1" DRAIN LINES DOWN IN CUSTODIAL ROOM. TERMINATE AT 1" ABOVE FLOOR MOUNTED JANITORS SINK. REFER TO DETAIL BP3.2 FOR TYPICAL TERMINATION.
- DROP 6" ROOF DRAIN DOWN IN MECHANICAL ROOM. REFER TO SHEET P1.0 AND P1.1 FOR CONTINUATION.
- PROVIDE SINGLE TRAP PRIMER AS SPECIFIED. MOUNT BELOW COUNTER AND CONNECT TO ADJACENT SINK. DROP 1/2" COLD WATER LINES DOWN THRU FLOOR AND CONNECT TO FLOOR NEAR EMERGENCY SHOWER AND EYE WASH AS SHOWN. REFER TO DETAIL MP3.1 FOR TYPICAL INSTALLATION.



UPPER LEVEL PLUMBING PLAN - AREA A
SCALE: 1/8" = 1'-0"



UPPER LEVEL PLUMBING PLAN - AREA B
SCALE: 1/8" = 1'-0"



BID SET - 01/24/2020

HUMMEL
a: 2785 North Bogus Basin Road
Boise, Idaho 83702
p: (208) 343.7523
f: (208) 343.0940

Project:
POCATELLO HIGH SCHOOL - ADDITION & RENO.

325 N ARTHUR AVE
POCATELLO, ID 83204

Sheet:
SECOND FLOOR PLUMBING PLAN - AREAS A AND B

Revisions: Δ

Engineered Systems Associates
1355 EAST CENTER
POCATELLO, IDAHO 83201
PHONE: (208) 233-0501
FAX: (208) 233-0529
EMAIL: esa@engsystems.com
ESA JOB NUMBER: 18075

Project No: 1355 EAST CENTER
Drawn By: M Jensen
Checked By: D Sudweeks
Date: 01/24/2020

Sheet No: **P1.2**